

# APM Canada - Installing P6 EPPM Client

This document describes how to install Primavera P6 EPPM Client.

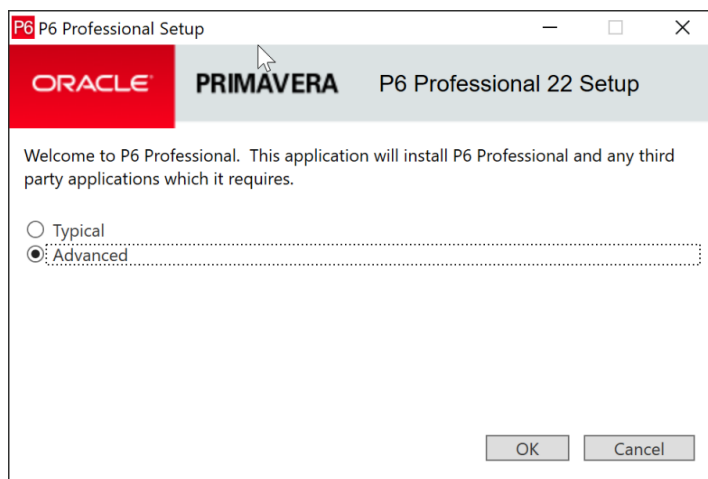
## Downloading

Primavera P6 EPPM Client version 22.12.7 can be download on the URL below.

<https://p6apm.emerald-associates.com/P6ProForEPPM-22.12.8.zip>

## Installation

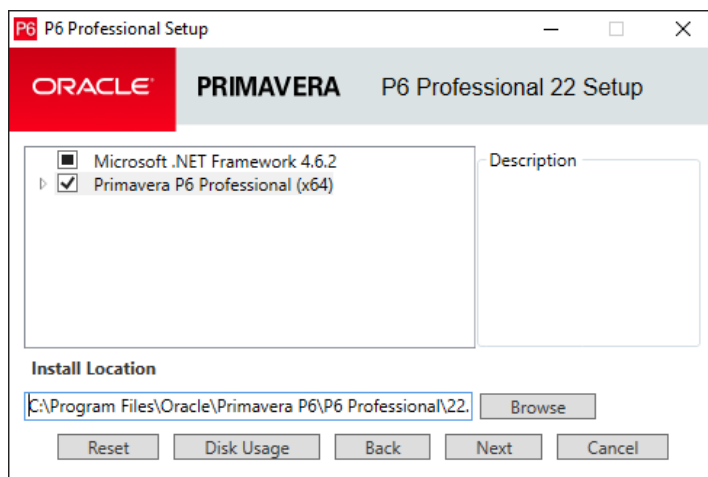
Step-by-step how to go over the Installation procedure.



Select "Advanced" option

Uncheck the box "Replace existing version", if you need to have access to your previous Primavera P6 EPPM Client version.

Click "OK"



Click "Primavera P6 Professional (x64)" label

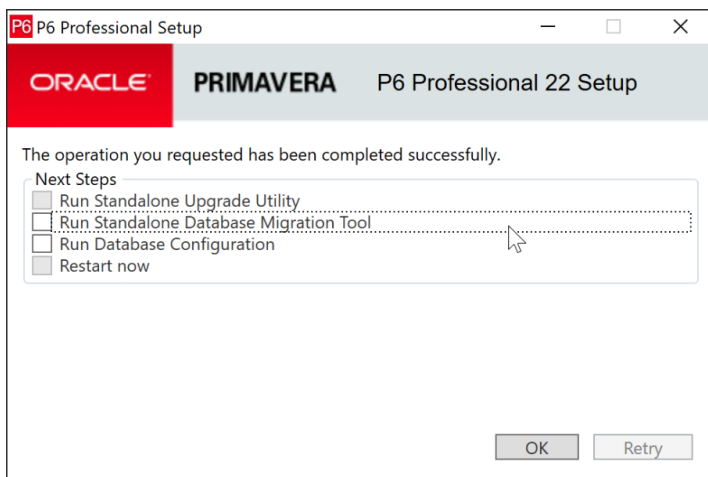
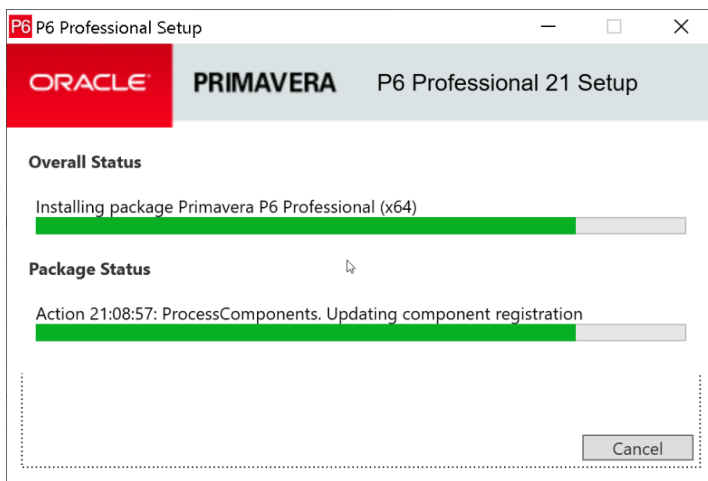
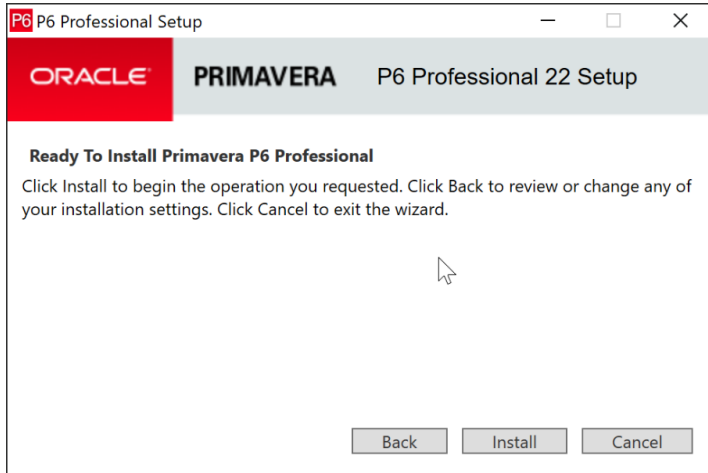
Use the "Install Location" field to define the Primavera P6 EPPM Client installation folder.

The default location would be:

***C:\Program Files\Oracle\Primavera P6\P6 Professional\22.12.8***

Click "Next"

Click "Install"



Uncheck all boxes.

Click "OK"

## Database setup

There are two to add the database connections to the Primavera P6 EPPM client

### 1- USING "PRMBOOTSRAPV2.XML"

The file can be download on URL below:

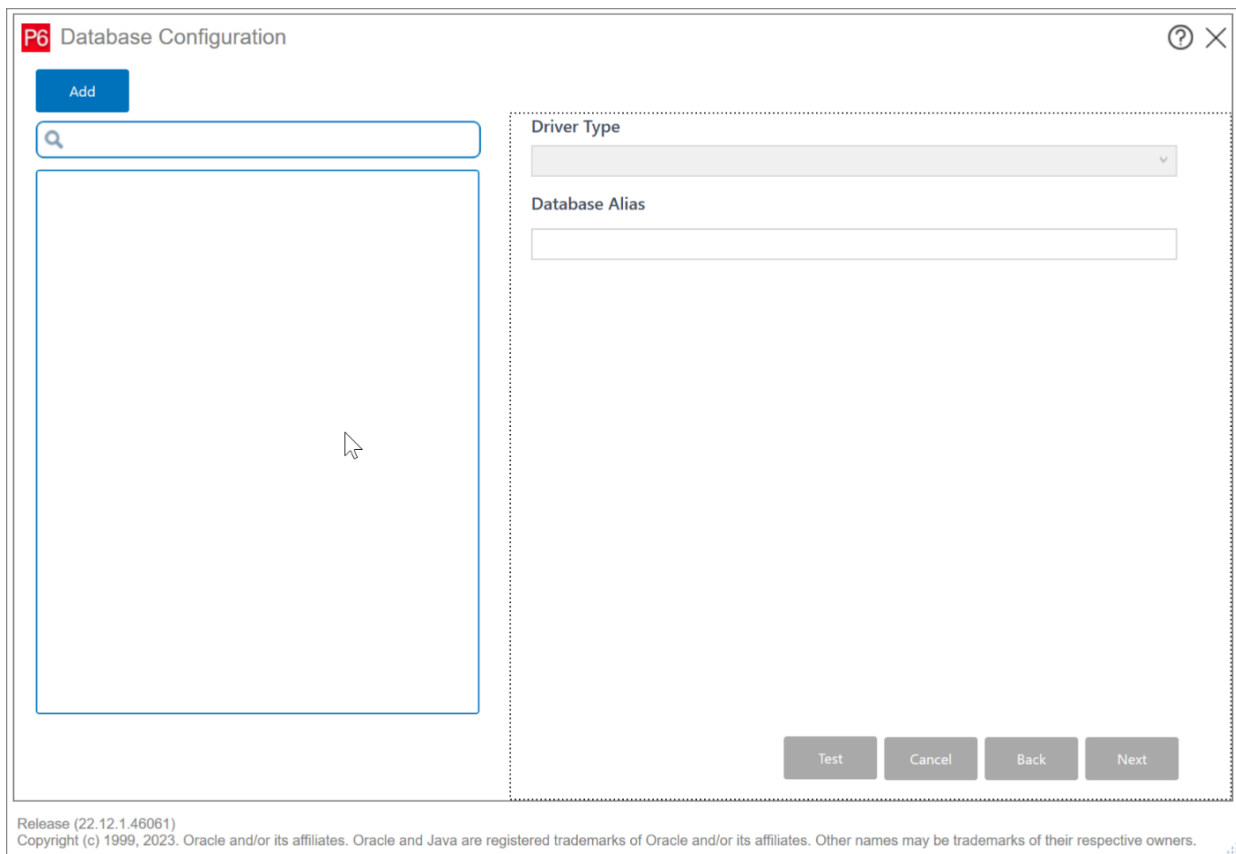
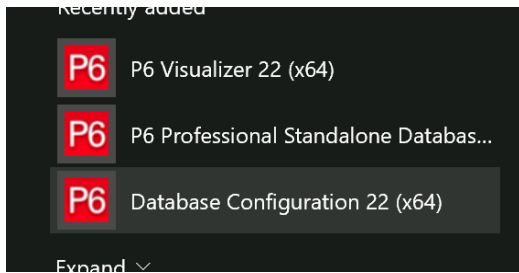
<https://p6apm.emerald-associates.com/PRMBootStrapV2.xml>

This file need to be copied into the Primavera P6 client installation folder.

Default folder: **C:\Program Files\Oracle\Primavera P6\P6 Professional\22.12.8**

### 2- MANUAL SETUP

Click window start icon and search for "Database Configuration 22 (x64)", it can be find under the "Oracle - Primavera P6" menu folder.



Click "Add" button.

	A	B
1	<b>Database</b>	<b>Connection String</b>
2	APM Canada - PROD	APM Canada - PROD@https://p6apm.emerald-associates.com/p6procloudconnect/
3	APM Canada - DEV	APM Canada - DEV@https://p6apm.emerald-associates.com/p6procloudconnect/

**P6 Database Configuration**

**Add**

APM Canada - DEV

APM Canada - PROD

**Driver Type**  
P6 Professional Cloud Connect

**Database Alias**  
APM Canada - DEV

**Connection String**  
APM Canada - DEV@https://p6apm.emerald-associates.com/p6procloudconnect/

**Read Timeout**  
9999

Use SAML SSO  
 Enable local cache  
 Use ADO.NET Data Access

**Test** **Cancel** **Back** **Save**

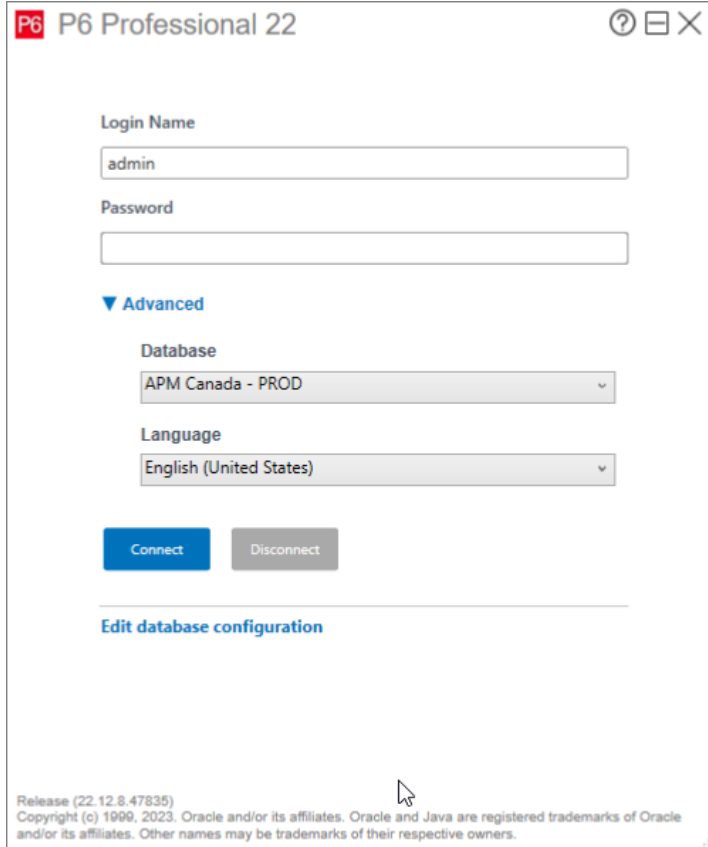
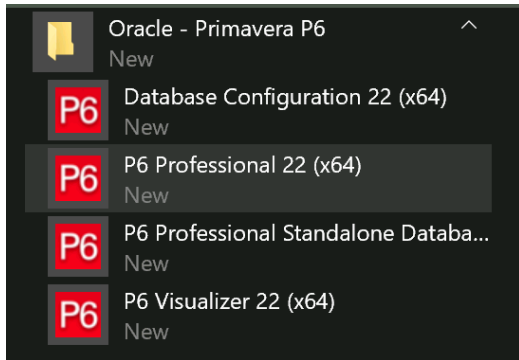
Release (22.12.8.47835)  
Copyright (c) 1999, 2023. Oracle and/or its affiliates. Oracle and Java are registered trademarks of Oracle and/or its affiliates. Other names may be trademarks of their respective owners.

- 1- Change Driver type to "P6 Professional Cloud Connect"
- 2- Define "Database Alias" using column "Database Alias" on the table below.
- 3- Define "Connection String" using column "Connection String" on the table below.  
(\* It needs to exactly how it is on table, including the spaces and case-sensitive).
- 4- Update "Read Timeout" to 9999.
- 5- Uncheck "Use SAML SSO".
- 6- Uncheck "Enable local cache"
- 7- Click "Save"

8- Repeat this same procedure for all of the database aliases (if exists).

## Using P6 Primavera

Click window start icon and search for "Database Configuration 22 (x64)", it can be find under the "Oracle - Primavera P6" menu folder.



Primavera P6 Professional 22 : (No current project)

File Edit View Project Enterprise Tools Help

**Projects**

Layout: Projects

Project ID	Project Name	2023		September 2023			October 2023				November 2023				December 2023				January 2024					
		20	27	03	10	17	24	01	08	15	22	29	05	12	19	26	03	10	17	24	31	07	14	21
EPS	Enterprise																							

General Notebook Planning Resources Budget Log Spending Plan Budget Summary

EPS ID: EPS      EPS Name: Enterprise

Status: Active      Responsible Manager: Enterprise

Check Out Status: Checked In      Checked Out By:      Date Checked Out:

Project Web Site URL:

Financial Period Calendar:

Portfolio: All Projects      Data Date:      User: admin      DB: APM Canada - PROD (EPPM)

About Primavera P6 Professional 22

About      System

**Primavera P6 Professional 22**  
22.12.8.47835

Copyright © 1999, 2023, Oracle and/or its affiliates.

Oracle and Java are registered trademarks of Oracle and/or its affiliates. Other names may be trademarks of their respective owners.

This software includes third party software code which requires certain notices and disclosures.

To view the list of third party component disclosures related to this product, please see the Commercial Notices and Disclosures document for the release.

This program uses ImageLib Corporate Suite by SkyLine Tools.

Close